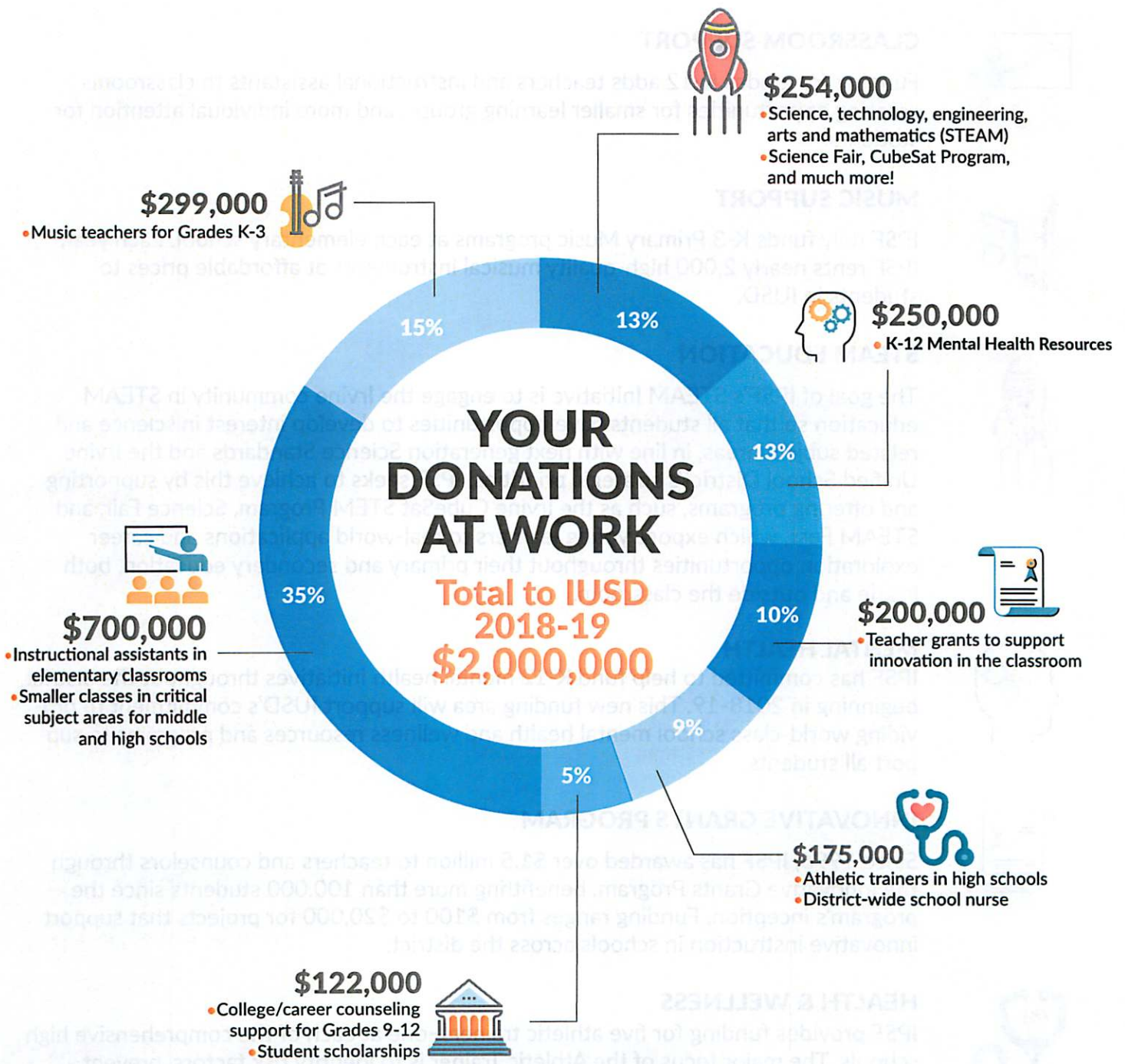


FUNDING PRIORITIES

2018-19



Parent donations to IPSF are at work every day in each IUSD school, providing the support and programs to ensure that students receive a world class education. Funding from IPSF impacts the following areas:



CLASSROOM SUPPORT

Funding for grades K-12 adds teachers and instructional assistants to classrooms creating opportunities for smaller learning groups, and more individual attention for students.



MUSIC SUPPORT

IPSF fully funds K-3 Primary Music programs at each elementary school. Each year, IPSF rents nearly 2,000 high-quality musical instruments at affordable prices to students in IUSD.



STEAM EDUCATION

The goal of IPSF's STEAM Initiative is to engage the Irvine community in STEAM education so that all students have opportunities to develop interest in science and related subject areas, in line with next generation Science Standards and the Irvine Unified School District's strategic priorities. IPSF seeks to achieve this by supporting and offering programs, such as the Irvine CubeSat STEM Program, Science Fair, and STEAM Fest, which expose young learners to real-world applications and career exploration opportunities throughout their primary and secondary education, both inside and outside the classroom.



MENTAL HEALTH

IPSF has committed to help fund K-12 mental health initiatives throughout the district, beginning in 2018-19. This new funding area will support IUSD's commitment to providing world-class school mental health and wellness resources and programs to support all students.



INNOVATIVE GRANTS PROGRAM

Since 1996, IPSF has awarded over \$1.5 million to teachers and counselors through the Innovative Grants Program, benefitting more than 100,000 students since the program's inception. Funding ranges from \$100 to \$20,000 for projects that support innovative instruction in schools across the district.



HEALTH & WELLNESS

IPSF provides funding for five athletic trainers—one at each of the comprehensive high schools. The major focus of the Athletic Trainer is to identify risk factors, prevent injuries, and provide appropriate medical treatment.